

FCL CUSTOM SEED BLENDS

Your member Mike Baker needs a custom seed blend. You want to order it from FCL using an PO eOrder. A custom seed blend isn't an item you can import from CRS Hub, so you won't be able to eOrder it (only mapped items can be eOrdered); all you can eOrder are the mapped seed items that make up the seed blend. This process was designed to get your blended seed order processed by the mainframe and keep your Inventory Position in agrē accurate.

What you'll find:

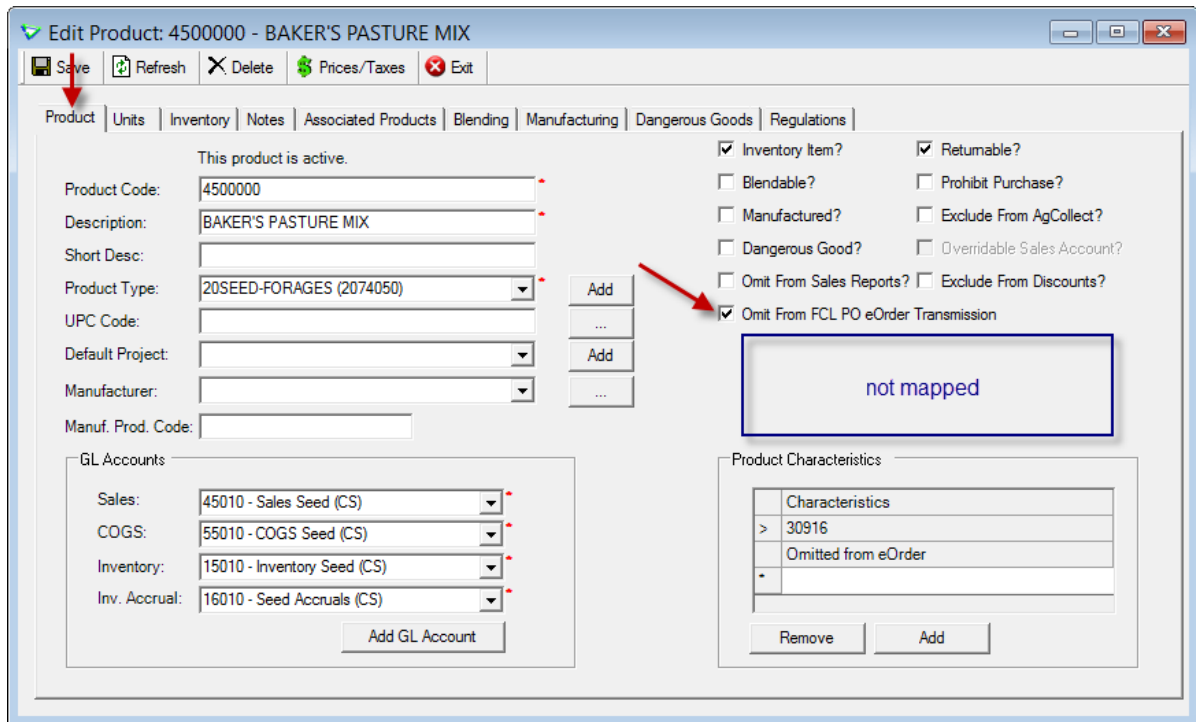
Setup: Blended Seed Item	2
Adding the PO eOrder	4
Receiving the Blended Seed	6

Setup: Blended Seed Item

Add a new retail-managed item (unmapped) for the blended seed.

On the **Product tab** check the following box:

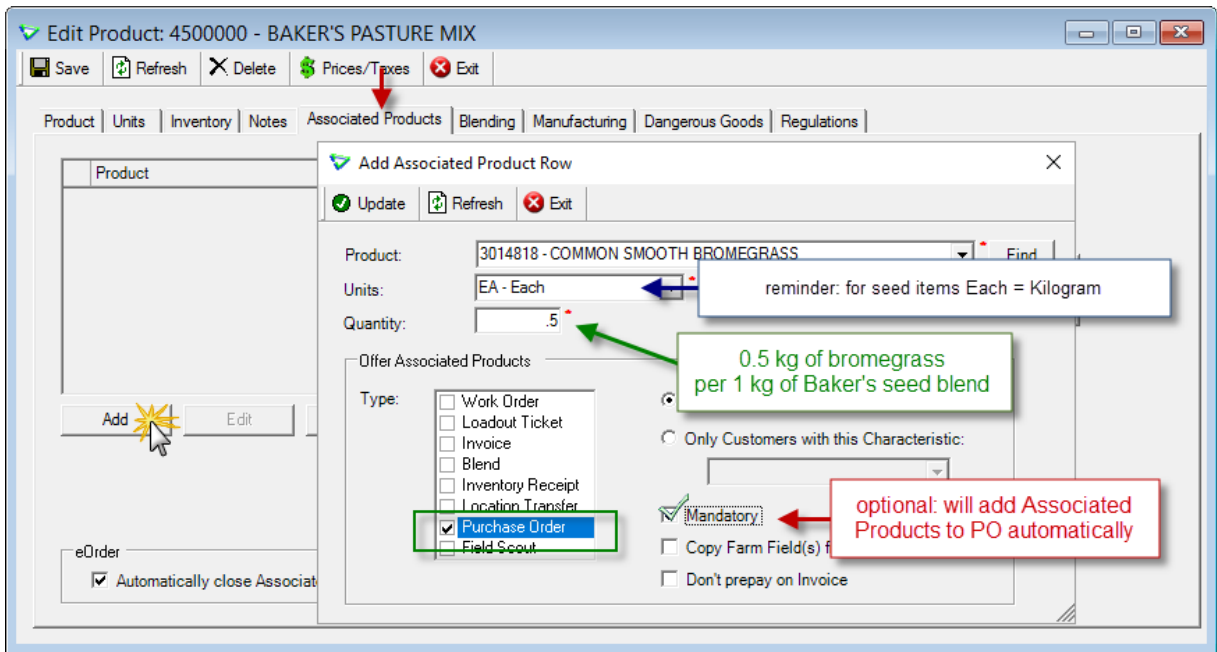
- Omit From FCL PO eOrder Transmission**
because the blended seed item is not mapped, it technically can't be eOrdered – checking this box tells agrē to omit this product when it sends the eOrder to CRS Hub



Inventory > Manage > Products | Add or Copy

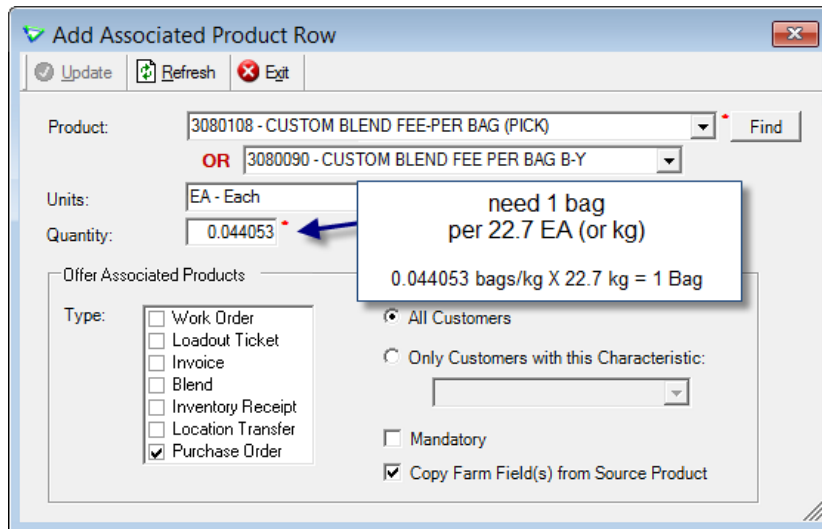
Tip Create the new seed blend item by copying an existing seed item that has a similar setup.

On the *Associated Products* tab, add the mapped seed items that make up the grower's blend. For this example, the custom seed blend contains 50% Bromegrass, 25% Canary Grass, and 25% Timothy.

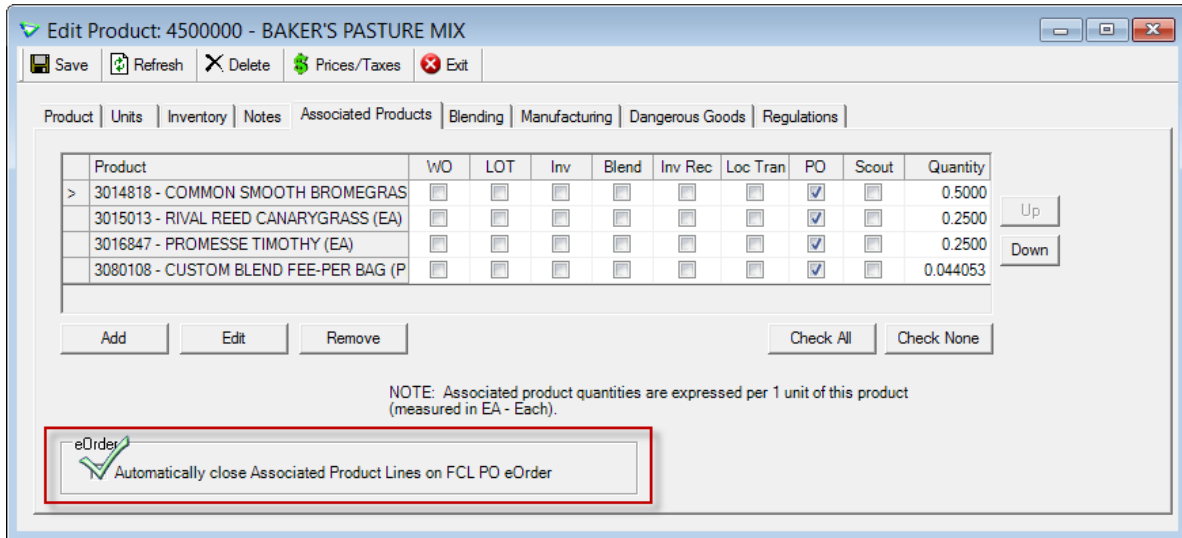


You can make the associated products **Mandatory** if you want to save a step and have them added automatically to the PO.

Remember to also add either **(3080108) CUSTOM BLEND FEE-PER BAG (PICK)** or **(3080090) CUSTOM BLEND FEE PER BAG B-Y** as an associated product – these are the items that tell the eOrder system that you are ordering blended seed, not individual seed items. For this example, each bag holds 22.7 kg of seed, so you'll need **0.044053 bags/kg**.



As this is a blended seed item, there's a bit more you need to tell agrē.



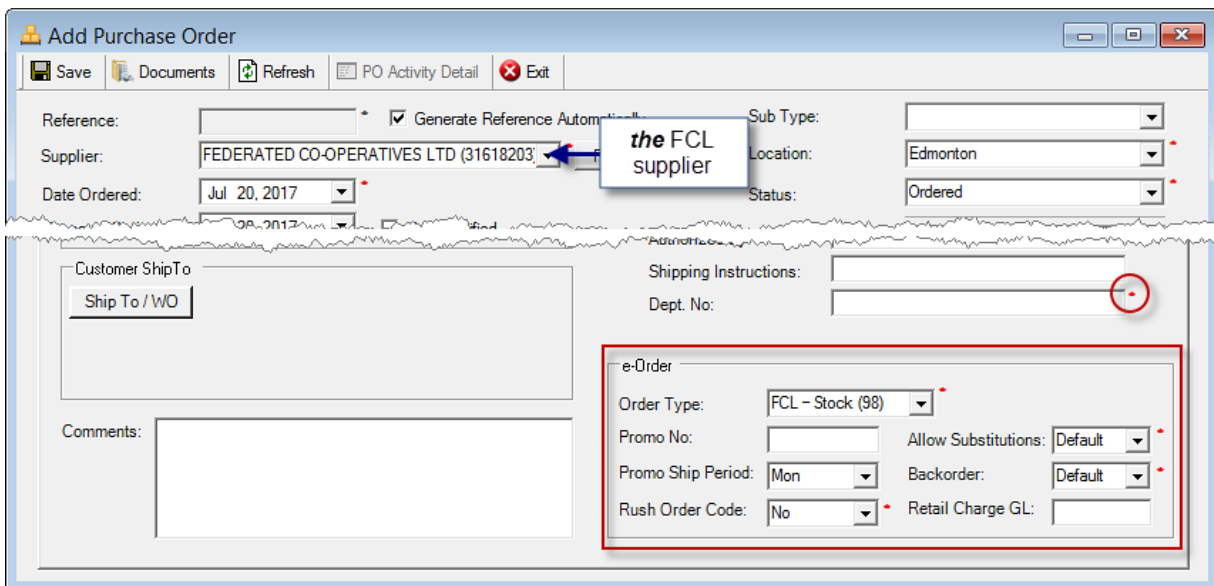
In the **eOrder** section check the following box:

- Automatically close Associated Product lines on FCL PO eOrder**

because you don't want to "double up" the amount reported on order by having both the seed blend *and* the products that make up the seed blend active on a PO – checking this box tells your agrē database not to count them twice and keeps your Inventory Position Report accurate (don't worry that the associated seed items won't get eOrdered if the product line is closed, the FCL mainframe ignores agrē's line status)

Adding the PO eOrder

Add a PO for *the* FCL supplier and fill in the required eOrder information on the **General tab**.



On the **Products** tab, add the blended seed item. If prompted, add all the **Associated Products**.

The screenshot shows the 'Add Purchase Order' window with the 'Products' tab selected. A callout box points to the 'Add Associated Products' dialog box, which is open over the product list. The dialog box has a 'Use Selected Rows' checkbox checked and an 'Exit' button. The product list in the dialog box shows four items selected with checkmarks in the 'Selected' column:

Selected	Quantity	Product
<input checked="" type="checkbox"/>	113.5000	3014818 - COMMON SMOOTH BROMEGRASS (EA)
<input checked="" type="checkbox"/>	56.7500	3015013 - RIVAL REED CANARYGRASS (EA)
<input checked="" type="checkbox"/>	56.7500	3016847 - PROMESSE TIMOTHY (EA)
<input checked="" type="checkbox"/>	10.0000	3080108 - CUSTOM BLEND FEE-PER BAG (PICK) (E)

Below the list, it says '4 associated products selected' and there is a 'Select All' button. A callout box points to the 'Select All' button with the text 'if prompted, add all the associated products'. Another callout box points to the 'Add Associated Products' dialog box with the text 'add the blended seed item'.

If you flagged the Associated Products as "Mandatory" they will be added automatically - you won't need to select them.

The associated seed products (the items that make up the seed blend) are added to the PO with a status of "Closed" so the quantity on order in agrē is not doubled up (counted once for the blended seed blend item and once for the ingredient seed items). This keeps your **Inventory Position** report accurate.

The screenshot shows the 'Add Purchase Order' window with the 'Products' tab selected, showing 5 items. A callout box points to the 'Qty Ordered' column for the first associated product, with the text 'rounded to whole number'. The product list is as follows:

Product/Description	Mfr Stock#	Qty Ordered	Received	Remaining	Unit Price	Prepay	Status	Location	Release	Inventory
> 4500000 - BAKER'S PASTURE MI		227.0	0.0	227.0		<input type="checkbox"/>	Active	Edmonton	<input type="checkbox"/>	<input checked="" type="checkbox"/>
3014818 - COMMON SMOOTH B	29271	114.0	0.0	0.0		<input type="checkbox"/>	Closed	Edmonton	<input type="checkbox"/>	<input checked="" type="checkbox"/>
3015013 - RIVAL REED CANARY	58378	57.0	0.0	0.0		<input type="checkbox"/>	Closed	Edmonton	<input type="checkbox"/>	<input checked="" type="checkbox"/>
3016847 - PROMESSE TIMOTHY	20936	57.0	0.0	0.0		<input type="checkbox"/>	Closed	Edmonton	<input type="checkbox"/>	<input checked="" type="checkbox"/>
3080108 - CUSTOM BLEND FEE	CUSTOM E	10.0	0.0	0.0		<input type="checkbox"/>	Closed	Edmonton	<input type="checkbox"/>	<input checked="" type="checkbox"/>

Because the eOrder system can handle only whole numbers (no decimals), the quantity requested of each associated product has been rounded.

Save and **Send** the eOrder.

Your *Inventory Position Report* shows what you have on order: just the blended seed, but not any of the ingredient seed items.

CO-OP

**Inventory Position
Edmonton**

20SEED-FORAGES

Product	Units	Min Level	Qty On Hand	Qty Ordered	Qty Committed	Qty Available
BAKER'S PASTURE MIX (4500000)	Each	0.0	0.0	227.0	0.0	227.0

Inventory > Reports

Receiving the Blended Seed

When the seed blend arrives, enter an *Inventory Receipt* to record receipt of the item.

Add Inventory Receipt

Supplier: FEDERATED CO-OPERATIVES LTD (31618203) Find Add

Reference: BAKERSEEDBLEND Shipping

Receipt Date: Jul 25, 2017 Trucker:

Comments: **3** Import from Purchase Order Use Selected Rows Exit

Product Criteria: Any Product This Product: <Start typing or use Find> Find

Product Type: <All Product Types>

Order Date Criteria: Any Date Date Range

1 Add Product Row Import From PO

	Import Qty	PO Ref		Num	Qty Ordered	Qty Rec
<input type="checkbox"/>		DRPO0001			10.0000	0
<input checked="" type="checkbox"/>	227.0	EPO0011	4500000 - BAKER'S PASTURE MIX (E)		227.0000	0
<input type="checkbox"/>		EPO0008	3062965 - TOUCHDOWN TOTAL (DF)		40.0000	0
<input type="checkbox"/>		DRPO0001	3062965 - TOUCHDOWN TOTAL (DF)		6.0000	0

all 10 of the 22.7kg bags of blended seed arrived, so you **received 227 Eaches** (remember EA means KG)

4 Lines found